

Unloading valve

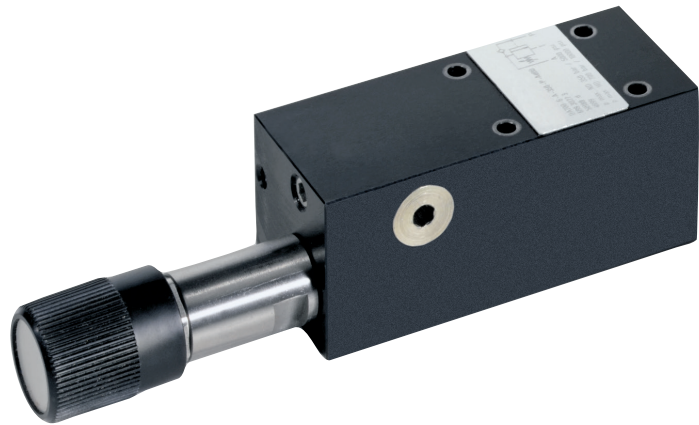
Type DA700

NG 6 ISO

up to 25 l/min, up to **700 bar**

Features

- Directly operated
- Leakage free
- Good corrosion resistance
- High operational safety and reliable switching
- High duty cycles and long lifetime
- Fine pressure adjustment over the entire pressure range
- Switch-off pressure up to max. 350 bar can be limited by lock nuts

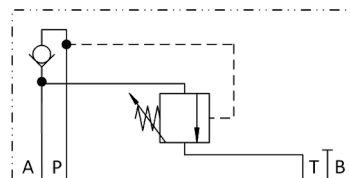


Applications

The valve serves to shut-off the low-pressure flow depending on the prevailing pressure. As soon as the system reaches the preset shut-off pressure, the low-pressure flow is switched to non-pressurised circulation, so that only the HP pump delivers into the system. Once the pressure drops below the preset value, the low-pressure flow is added again. As the maximum shut-off pressure is secured by lock nuts, it cannot be exceeded by accident.

Design

- A Connection for low-pressure pump
- P Connection for high-pressure pumps
- T Tank connection
- The unloading valve is designed as final valve of vertical valve stacks.



Technical data

Hydraulic fluid	Mineral oil according to DIN 51524 (other fluids on request)
Fluid temperature range	- 20 to 80 °C
Ambient temperature range	- 30 to 50 °C
Viscosity range	5 to 400 mm ² /s
Porting	NG 6 according to DIN 24340/ISO 4401/CETOP RP 121 H
Max. operating pressure connection P	700 bar
Max. operating pressure connection A, T	350 bar
Max. flow rate	25 l/min
Pilot pressure adjustable	25 bar up to 350 bar
Filtration (recommendation)	According to NAS 1638, class 6 or ISO/DIN 4406 17/15/12
Weight	2.1 kg
Material	Housing steel, galvanized, chromated Cartridge steel corrosion resistant Adjusting knob plastic

Type DA700

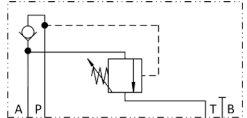
Up to 700 bar

Up to 25 l/min, up to 700 bar

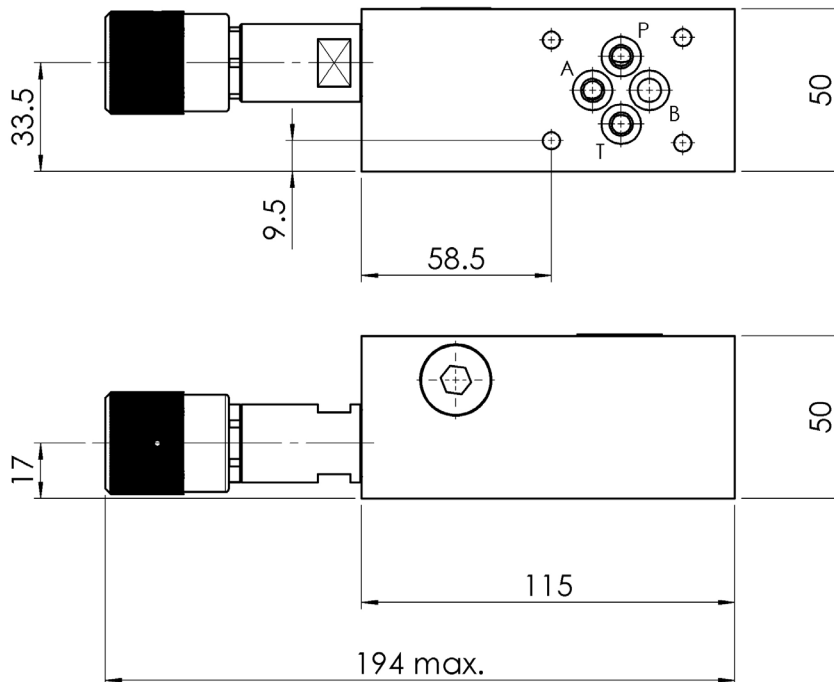
Type code

Example	DA	700	-	6	-	A	-	350	-	V	-	A		00
Unloading valve														Special design 01 ... 99 (00 for standard)
Type	BV700													
Size	6													
Low pressure port	A (connection for low-pressure pump)													
Max. shut-off pressure	350 bar													
Seal material	V (FPM) other seal materials on request													
														Part index Please leave blank For internal purposes
														Design revision For internal purposes

Standard design

Low pressure port	A
Type code	DA700-6-A-350-V-*00
Part No.	3682115
Symbol	

Dimensional drawings



Scope of delivery

For each valve the following is included:
 4 pieces O-rings 9,25 x 1,78 mm 90° ShA
 1 Adjusting knob mounted
 1 Cap in addition

Tie bolts/ fixing screws and subplates
 see technical data sheet AP/ RP