

Radial piston pumps

Type HRK

700 bar

0,12 up to 0,34 cm³/rev

Features

- Compact design
- Hollow shaft
- Low pulsation
- Self priming
- High volumetric efficiency

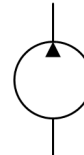


Design

- With hollow shaft for direct assembly of motor without bell housing and coupling
- With 1 or 2 pumping elements (depending on size)

Applications

- Machine tools
- Clamping device
- Power units (e.g. for presses)
- Pull-off fixtures
- Lifting systems
- Mobile power unit
- Small units
- Not suited for pulsation



Technical Data

Hydraulic fluid	Mineral oil according to DIN 51524 (other fluids on request)	
Fluid temperature range	-20 up to 80 °C	
Ambient temperature range	-30 up to 50 °C	
Viscosity range	12 to 220 mm ² /s	
Operation pressure at suction port	-0,2 bar to 0,5 bar gauge pressure	
Max. operating pressure	700 bar continuous pressure	
Filtration (recommendation)	According to NAS 1638 class 6 resp. ISO/DIN 4406 17/15/12	
Weight	See product information	
Installation position	In tank (any)	
Max. speed range	500-3600 min ⁻¹ (see product information)	
Direction of rotation	Any	
Suction height	Max. 150 mm	
Material	Eccentric shaft:	steel
	Pressure port body:	steel
	Pump housing and flange:	aluminium

Type HRK

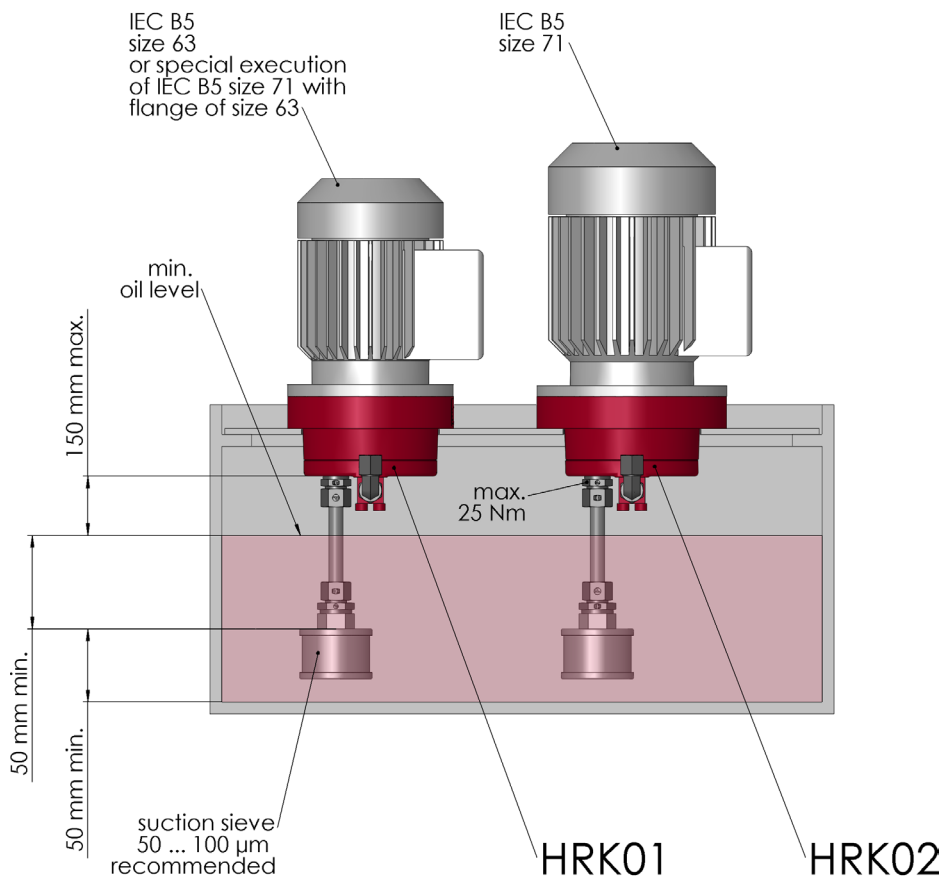
700 bar

0,12 up to 0,34 cm³/rev

Ordering code

Example	HRK	01	-	0,34	-	700	-	V	-	DV	-	-	-	00
Radial piston pump														
Type	01													
	02													
Displacement [cm³/rev]	see product inform.													
Max. operating pressure [bar]	see product information													
Seal material	V [FPM] other seal materials on request													
Options	DV (pressure relief valve) X (without pressure relief valve)													
Special design 01 ... 99 (00 for standard)														
Part index Please leave it blank (small letters a-z; different letters do not effect interchangeability)														
Design revision see dimension drawings (capital letters A-Z; identical letters equal same connecting dimensions)														

Mounting



Product information

Size	Displacement ¹⁾ [cm ³ /rev]	Operating pressure max. [bar]	Number of pumping elements	PR* yes / no	max. speed [RPM]	Weight ca. [kg]	max. Torque ²⁾ [Nm]	max. Power ²⁾ [kW]	Part No.
01	0,12	700	1	no	3600	1,8	5,15	0,81	4002080
01	0,12	700	1	yes	3600	1,8	5,15	0,81	4002075
01	0,17	700	1	no	3600	1,8	7,42	1,17	4002081
01	0,17	700	1	yes	3600	1,8	7,42	1,17	4002076
01	0,24	700	2	no	3600	1,8	5,15	0,81	4002074
01	0,24	700	2	yes	3600	1,8	5,15	0,81	4002077
01	0,29	700	2	no	3600	1,8	6,28	0,99	4002082
01	0,29	700	2	yes	3600	1,8	6,28	0,99	4002078
01	0,34	700	2	no	3600	1,8	7,42	1,17	4002083
01	0,34	700	2	yes	3600	1,8	7,42	1,17	4002079
02	0,12	700	1	no	3600	1,9	5,15	0,81	4002086
02	0,12	700	1	yes	3600	1,9	5,15	0,81	4002087
02	0,17	700	1	no	3600	1,9	7,42	1,17	4002088
02	0,17	700	1	yes	3600	1,9	7,42	1,17	4002089
02	0,24	700	2	no	3600	1,9	5,15	0,81	4002084
02	0,24	700	2	yes	3600	1,9	5,15	0,81	4002090
02	0,29	700	2	no	3600	1,9	6,28	0,99	4002093
02	0,29	700	2	yes	3600	1,9	6,28	0,99	4002091
02	0,34	700	2	no	3600	1,9	7,42	1,17	4002095
02	0,34	700	2	yes	3600	1,9	7,42	1,17	4002094

* PR: pressure relief valve

1) Higher displacements on request

2) n = 1500 1/min; $\eta_t = 0,8$; p = p_{max}

Calculation of driving motor power

$$P = \frac{p \cdot V_g \cdot n \cdot k}{\eta_t \cdot 600 \cdot 10^3}$$

P = Driving power [kW]
 p = Operating pressure [bar]
 V_g = Displacement [cm³/rev]
 n = Speed [rpm]
 η_t = Overall efficiency approx. 0,8

k = Pulsation factor
 - with 1 pumping element: k approx. 3,10
 - with 2 pumping elements: k approx. 1,60

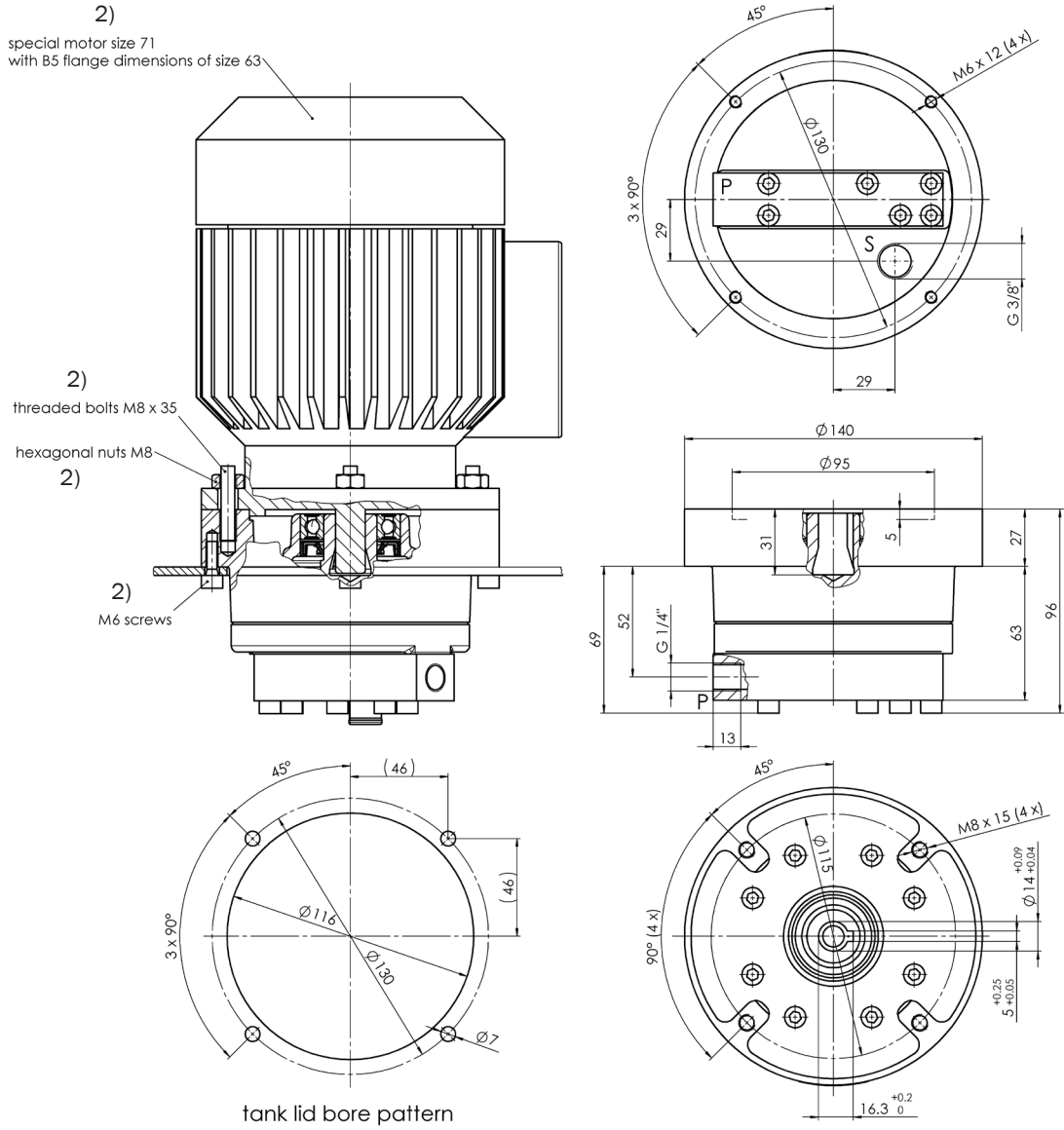
Type HRK

700 bar

0,12 up to 0,34 cm³/rev

Dimensions drawings

Size HRK01 / Design revision A



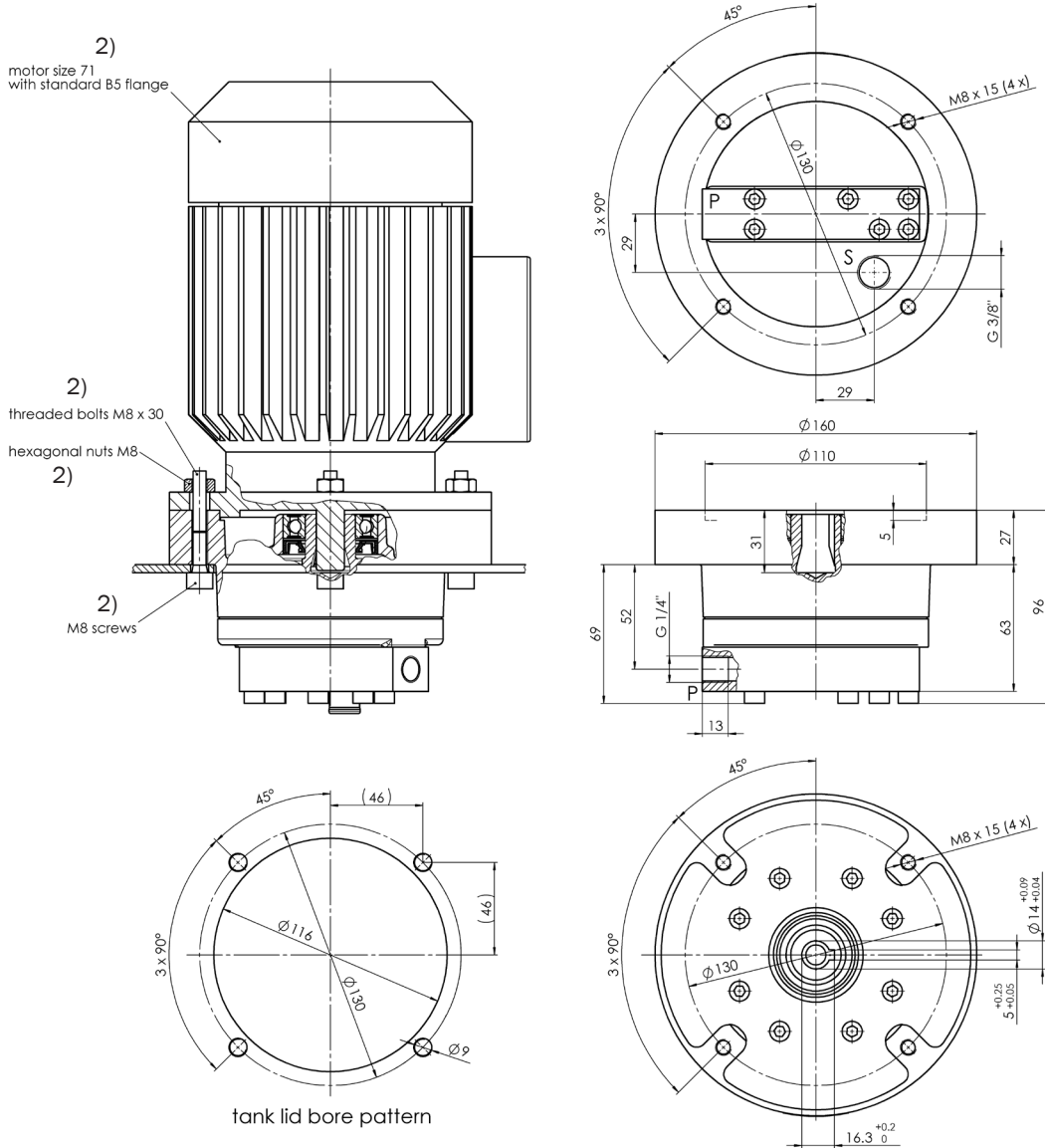
2) Not included in the scope of supplier

Type HRK

700 bar

0,12 up to 0,34 cm³/rev

Size HRK02 / Design revision A



2) Not included in the scope of supplier

Bieri Hydraulik AG

Könizstrasse 274
CH-3097 Liebefeld
Tel. +41 31 970 09 09 | Fax +41 31 970 09 10
info@bierihydraulics.com | www.bierihydraulics.com

The information in this brochure relates to the operating conditions and applications described.

For applications and operating conditions not described, please contact the relevant technical department.

Subject to technical modifications.